

Support and Resources for Parents

 ldaamerica.org/parents

August 18,
2013



Parents are often baffled by the problems presented by a child with learning disabilities. Often this “invisible disability” does not become obvious until a child reaches school age. Even then, difficulties may be subtle and hard to recognize.

Here you will find a wealth of information on understanding learning disabilities, negotiating the special education process, and helping your child and yourself.

New to LD



If you are just learning that you or your child has a learning disability you may be confused and not know where to begin. It can be a daunting and complicated task. But don't despair. LDA is here to help you understand this new diagnosis and lead you or your child to the right support systems.

[Learn more about LD](#)

Specific Learning Disabilities

Auditory Processing Disorder

Affects how sound that travels unimpeded through the ear is processed & interpreted by the brain.

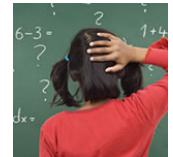
[Learn more about Auditory Processing Disorder](#)



Dyscalculia

A specific learning disability that affects a person's ability to understand numbers and learn math facts.

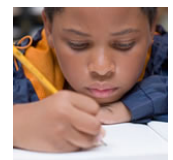
[Learn more about Dyscalculia.](#)



Dysgraphia

A specific learning disability that affects a person's handwriting ability and fine motor skills.

[Learn more about Dysgraphia.](#)



Dyslexia

A specific learning disability that affects reading and related language-based processing skills.

[Learn more about Dyslexia.](#)



Language Processing Disorder

A specific type of (APD) that affects attaching meaning to sound groups that form words, sentences and stories.

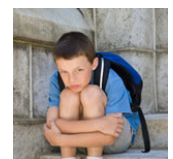
[Learn more about Language Processing Disorder](#)



Non-Verbal Learning Disabilities

Has trouble interpreting nonverbal cues like facial expressions or body language and may have poor coordination.

[Learn more about Non-Verbal Learning Disabilities](#)



Visual Perceptual/Visual Motor Deficit

A disorder that affects the understanding of information that a person sees, or the ability to draw or copy.

[Learn more about Visual Perceptual/Visual Motor Deficit](#)

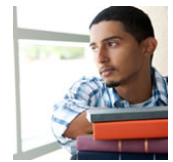


Related Disorders

ADHD

A disorder that includes difficulty staying focused and paying attention, controlling behavior and hyperactivity.

[Learn more about ADHD.](#)



Dyspraxia

A disorder which causes problems with movement and coordination, language and speech.

[Learn more about Dyspraxia.](#)



Executive Functioning

Affects, planning, organization, strategizing, attention to details and managing time and space.

[Learn more about Executive Functioning.](#)



Memory

A deficit in any or all types of memory, impairing the ability to store and retrieve information required to carry out tasks.

[Learn more about Memory.](#)



Support for Parents

LD/ADHD Basics

Learning the basics about LD and ADHD is an important start to getting help. After the signs and symptoms of LD are recognized, the appropriate assessment and evaluation will be needed to determine the right strategies to help the individual.

[Read articles](#)



Assessment & Evaluation

Evaluation involves gathering information from a variety of sources about a child's functioning and development in all areas. It is generally one of the first steps in determining if a child has a learning disability. This section will help parents answer their questions on assessment and evaluation.

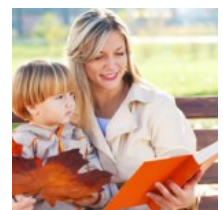
[Read articles](#)



Early Childhood

Early Childhood includes the evaluation and treatment provided to families and their children under 3 years old who have, or are at risk for having, a disability or delay in speech, language, or hearing. Starting early is important for long-term success.

[Read articles](#)



Pre-K thru High School

Each stage in a child's life provides a different learning profile of needs. This section will provide specific information related to the different stages of a child's school years from preschool to elementary school to middle school and high school.

Read articles



Special Education Services

This section will help guide you to specific information related to navigating the special education process. Where to start, who to talk to, and the options for special education evaluation as well as the vocabulary of special education including IEPs and 504s can be found here.

Read articles



Beyond the Classroom

The impact of learning disabilities does not end in the classroom but can extend to activities outside the schoolyard. This area will provide articles of interest related to activities beyond the classroom: tutoring, summer activities, special education expenses, social skills and more.

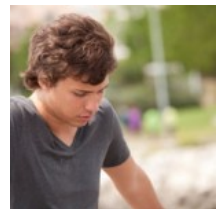
Read articles



Mental Health

Mental health issues can affect anyone, including individuals with learning disabilities (LD) and/or ADHD. Here you will find tips and guidelines for preventing, identifying, and addressing mental health issues linked to learning disabilities.

Read articles



Technology

The growth of technology is widespread in our everyday lives and is used extensively in the classroom. It can be an invaluable tool for individuals with learning disabilities (LD). Here we explore current and new technologies for individuals with LD to consider.

Read articles



Parent Resources

Guides & Booklets

- **An Action Guide for ADHD: Next Steps for Patients, Clinicians, and Insurers**

This Action Guide is based on the results of a public review process of treatment options for ADHD.

- **NCLB and IDEA: What Parents of Students with Disabilities Need to Know and Do**
August 2006, by Candace Cortiella for the National Center on Educational Outcomes.
- **A Parent's Guide to Response-to-Intervention (RTI)**
Provides an overview of the RTI process, describes how it is implemented in schools and offers questions that parents can ask.
- **Life Success for Children with Learning Disabilities: A Parent Guide**
The research traced the lives of individuals with learning disabilities in an attempt to identify factors that predicted successful life outcomes.
- **Identifying and Treating Attention Deficit Hyperactivity Disorder: A Resource for School And Home**
This resource guide designed for families and educators provides information on how (ADHD) is identified and treated.
- **College Guide for Students with Learning Disabilities**
In this guide from BestColleges.com, students and families will find an overview of the transition into college, a guide to college accommodations & assistive learning technology as well as key strategies, resources, scholarships and more for students with learning disabilities.
- **Teaching Our Youngest: A Guide for Preschool Teachers and Child Care and Family Providers**
This booklet describes what can be done to help children to develop their language abilities, increase their knowledge, become familiar with books and other printed materials, learn letters and sounds, recognize numbers and learn to count.
- **Tools for Student Success**
Selected publications for parents and teachers from the U.S. Department of Education's ED.gov website or in print form.
- **Ed Pubs**
Items include: brochures, CD-ROMs, grant applications, newsletters, posters, research reports, videotapes and financial aid products.